


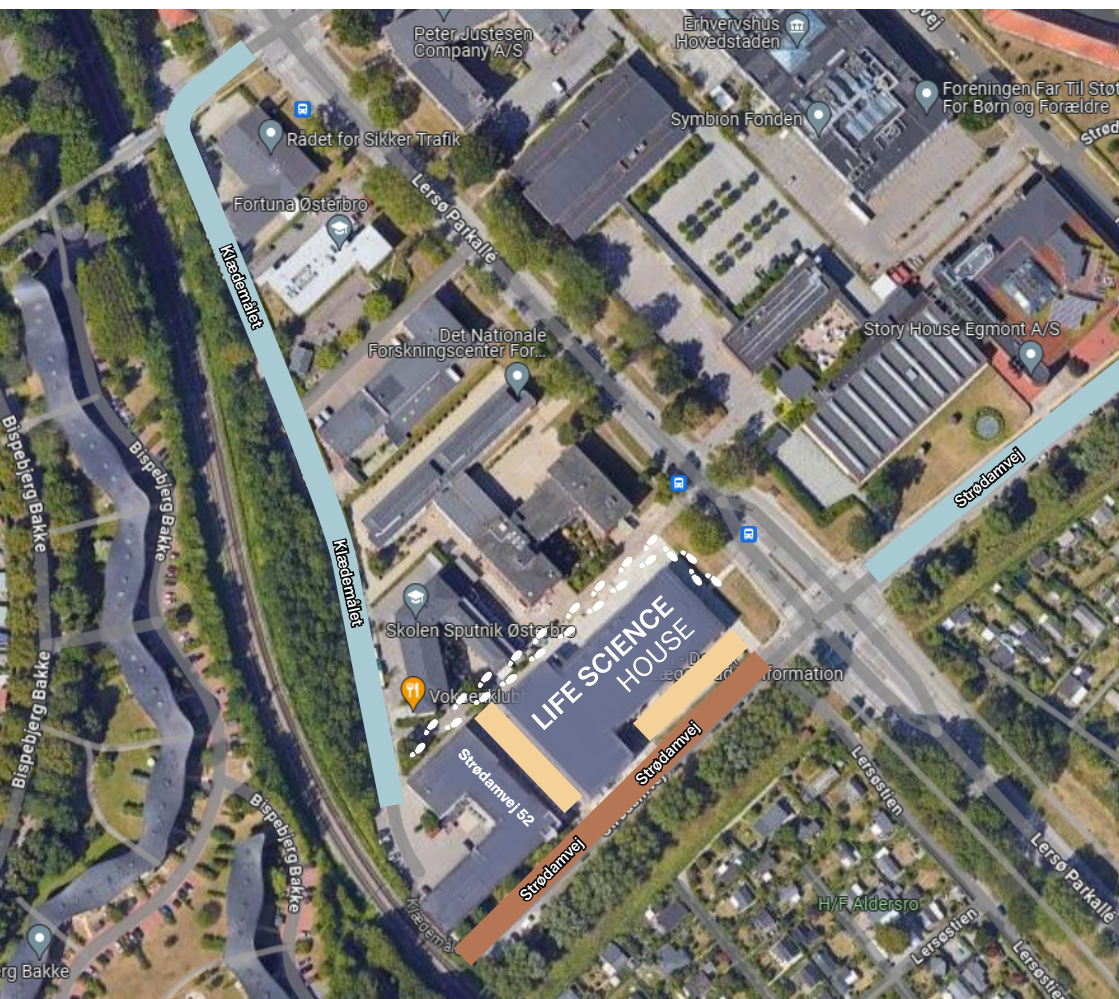


## PARKING

Parking in the yellow area is free, if you register via the self-service tablet at the reception at Lersø Parkallé 101.

Contact the reception Monday - Thursday at 08.00 - 16.00 and Friday at 08.00 - 15.30, if you have any questions.

-  Free parking (no time restriction)
-  Life Science House parking (registration in reception necessary)
-  4 hours free parking (registration in reception not necessary)



# PUBLIC TRANSPORTATION

There are bus and train connections near the Life Science House.

You can plan your journey at [www.journeyplanner.dk](http://www.journeyplanner.dk) or [www.rejseplanen.dk](http://www.rejseplanen.dk)

- The S-train stops at Ryparken St., Bispebjerg St. and Emdrup St.
- It takes about 10-15 minutes to walk from either of the three stations.
- Bus 18 stops at Strødamvej (Lersø Parkallé). You can take bus 18 e.g. from Emdrup St. and Lergravsparken St.

