




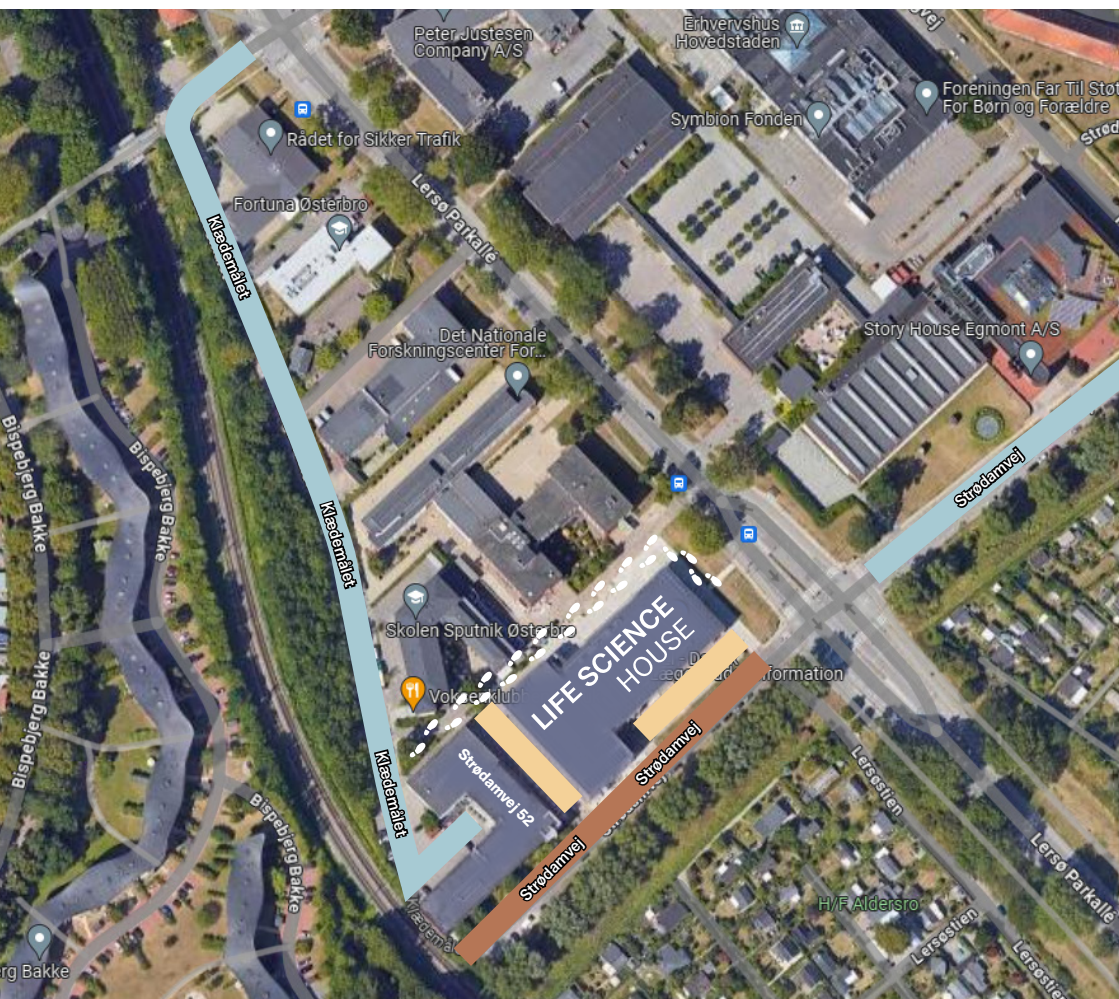
PARKING

Parking in the yellow area is free, if you register via the self-service tablet at the reception at Lersø Parkallé 101.

Contact the reception Monday - Thursday at 08.00 - 16.00 and Friday at 08.00 - 15.30, if you have any questions.

-  Free parking (no time restriction)
-  Life Science House parking (registration in reception necessary)
-  4 hours free parking (registration in reception not necessary)

Please note: You are also allowed to park in the courtyard behind Strødamvej 52



PUBLIC TRANSPORTATION

There are bus and train connections near the Life Science House.

You can plan your journey at www.journeyplanner.dk or www.rejseplanen.dk

- The S-train stops at Ryparken St., Bispebjerg St. and Emdrup St.
- It takes about 10-15 minutes to walk from either of the three stations.
- Bus 18 stops at Strødamvej (Lersø Parkallé). You can take bus 18 e.g. from Emdrup St. and Lergravsparken St.

